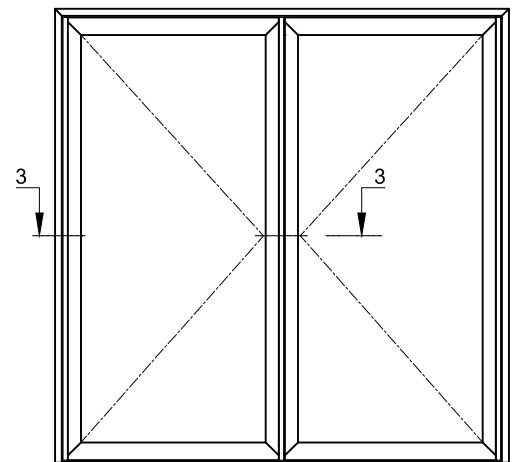
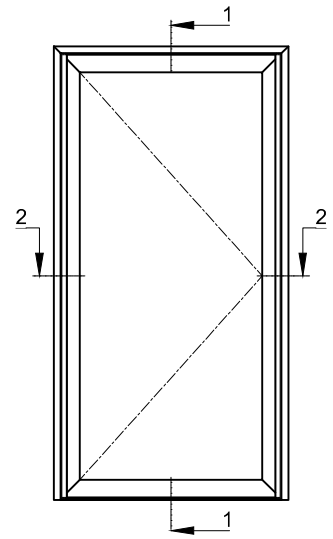
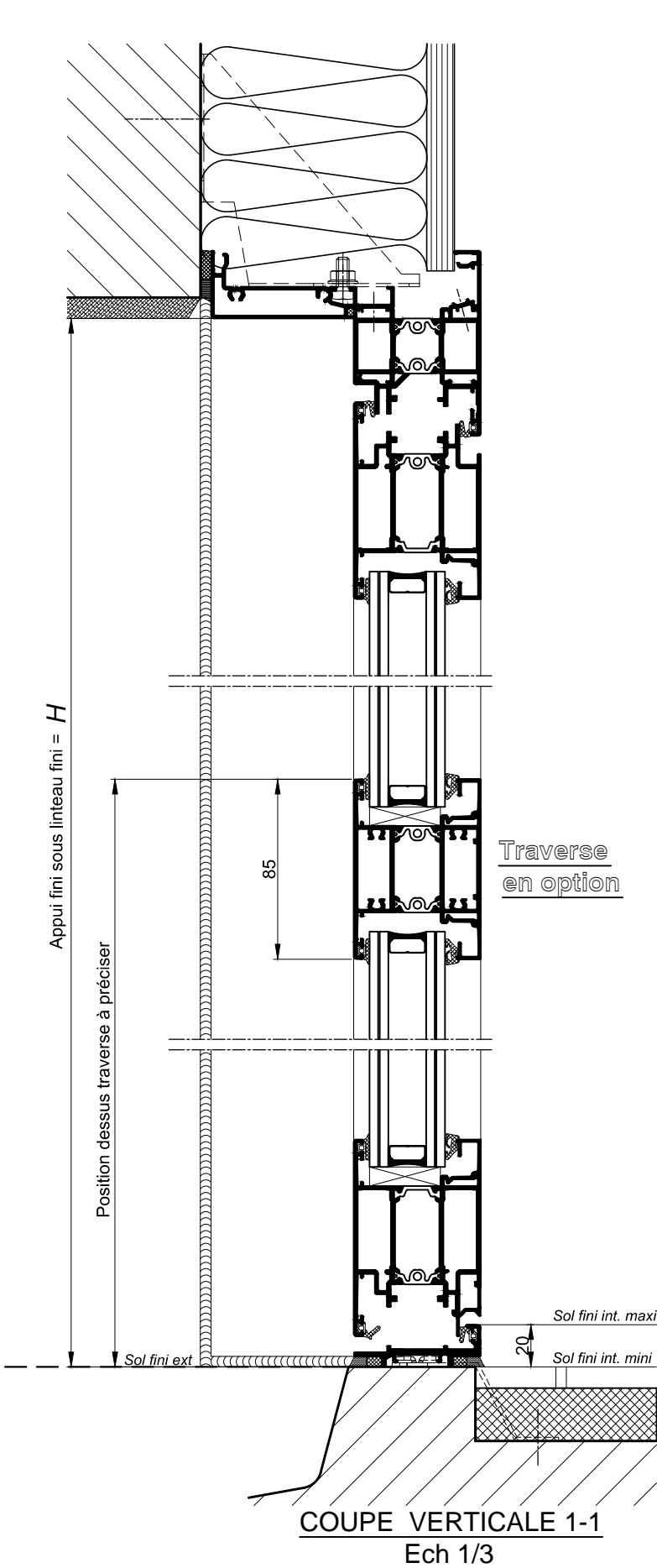
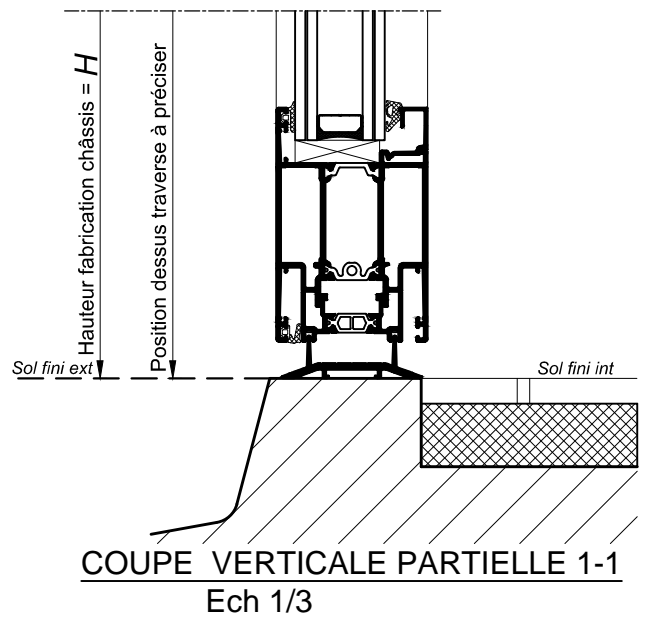


PORTE GRAND TRAFIC A L'ANGLAISE ANTI-PINCE DOIGT DE NIVEAU 2  
1 VANTAIL ET 2 VANTAUX

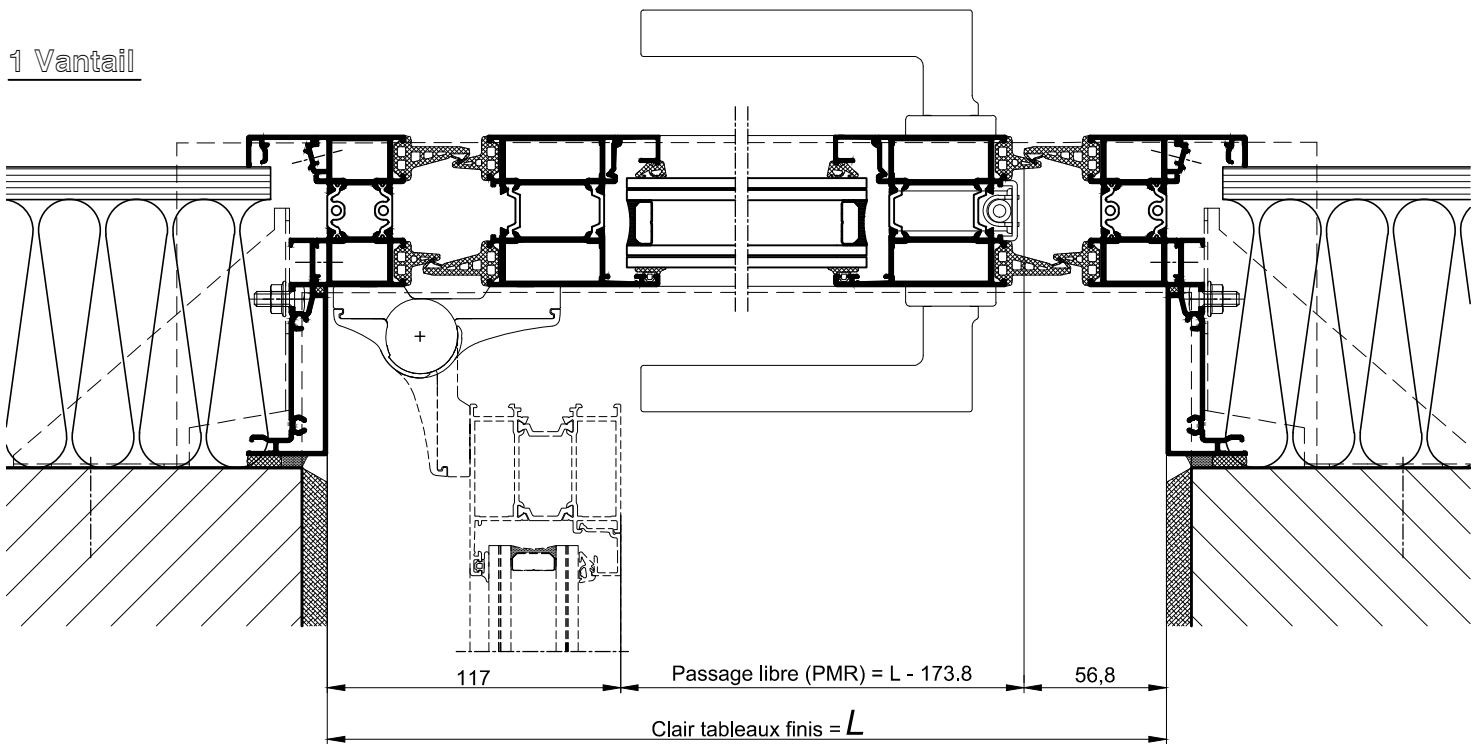


Option seuil plat



PORTE GRAND TRAFIC A L'ANGLAISE ANTI-PINCE DOIGT DE NIVEAU 2  
1 VANTAIL ET 2 VANTAUX

1 Vantail

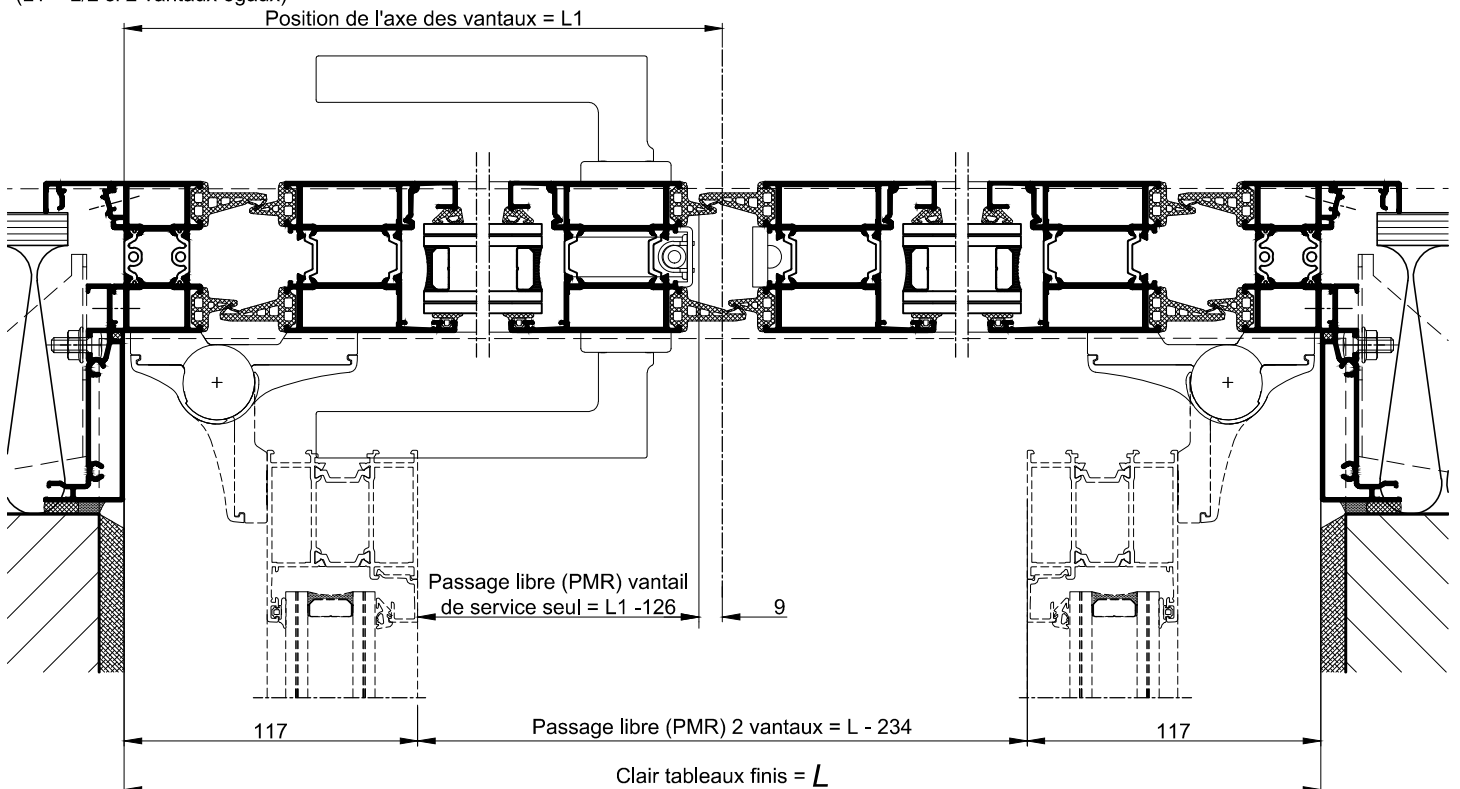


**COUPE HORIZONTALE 2-2**

Ech 1/3

2 Vantaux

( $L1 = L/2$  si 2 vantaux égaux)



**COUPE HORIZONTALE 3-3**

Ech 1/3