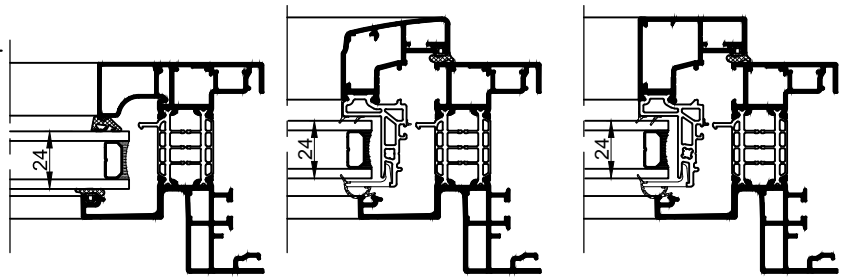


CHASSIS OUVRANTS SPECIAUX

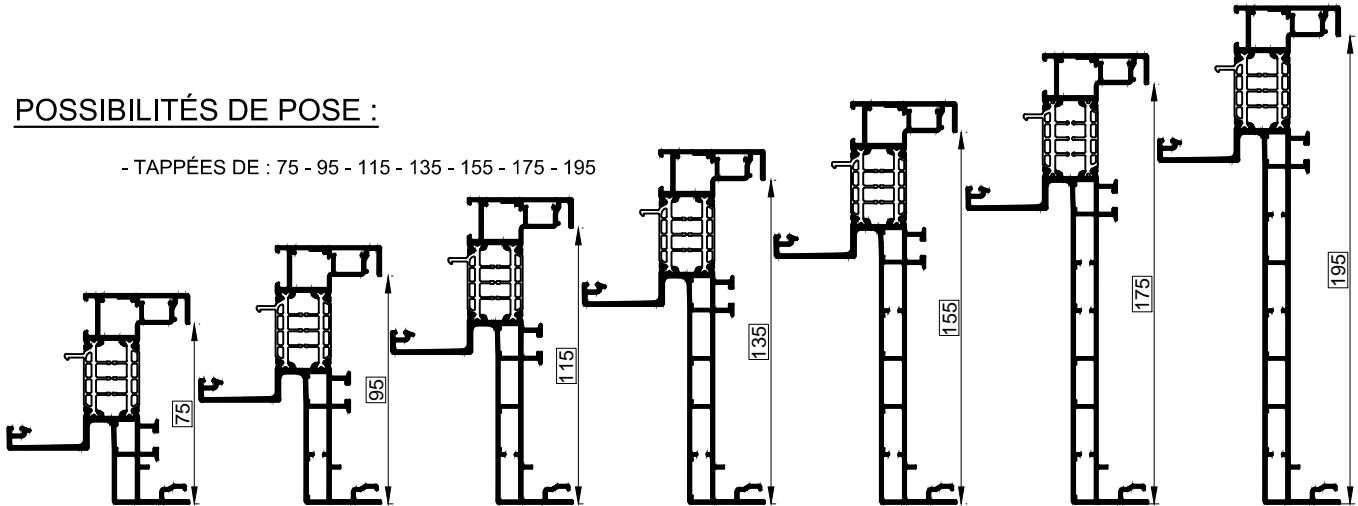
TYPES DE CHASSIS RÉALISABLES :

- FIXE , FA1, SOUFFLET

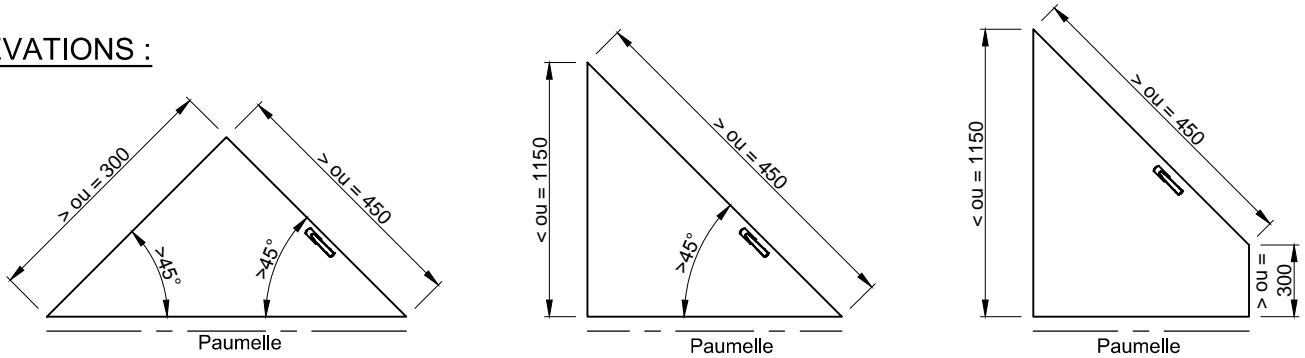


POSSIBILITÉS DE POSE :

- TAPPÉES DE : 75 - 95 - 115 - 135 - 155 - 175 - 195



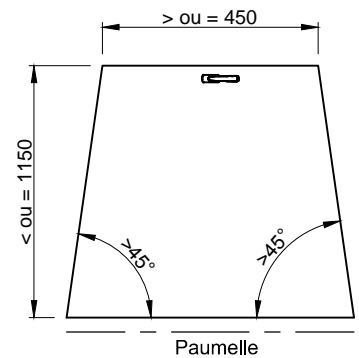
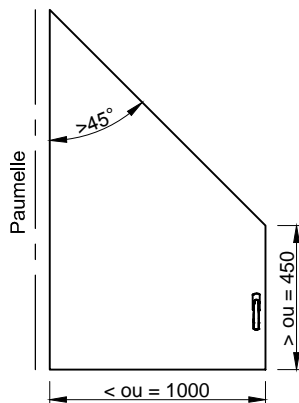
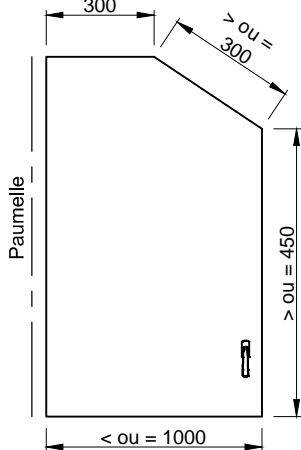
ÉLÉVATIONS :



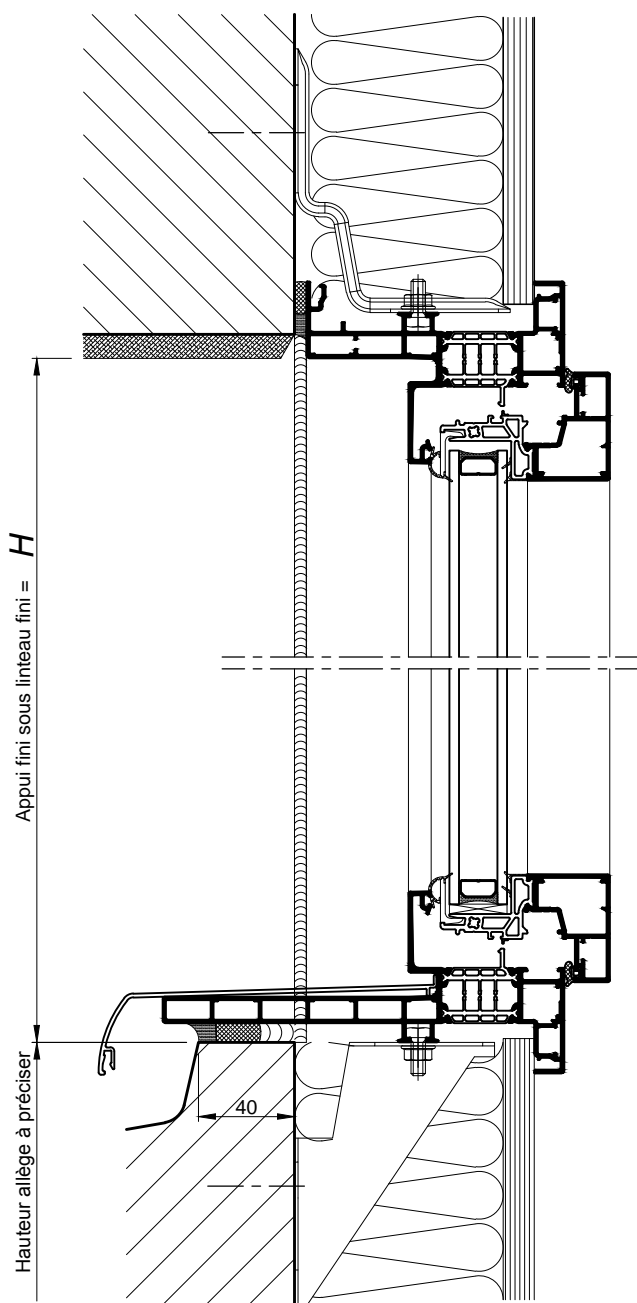
CONDITIONS A REMPLIR :

- Toutes les arrêtes sont > 300 mm sauf pour la poignée >450 mm
- Côté paumelles angle > 45°
- Pas de châssis OB1, OB2, FA2, FS1, FS2

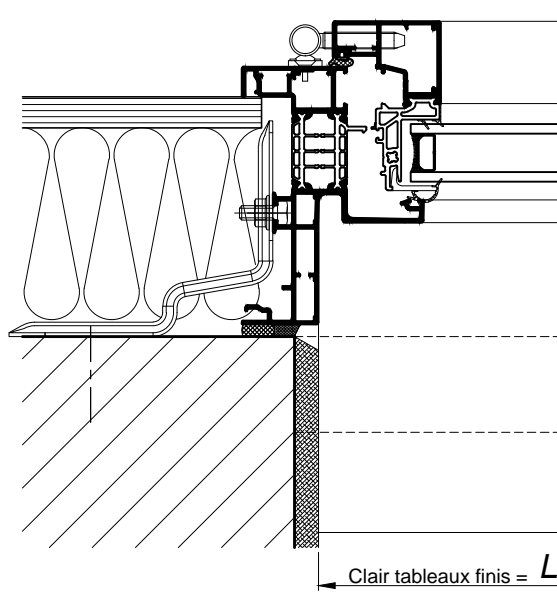
> ou = 300



SUR ALLÈGE MAÇONNÉE

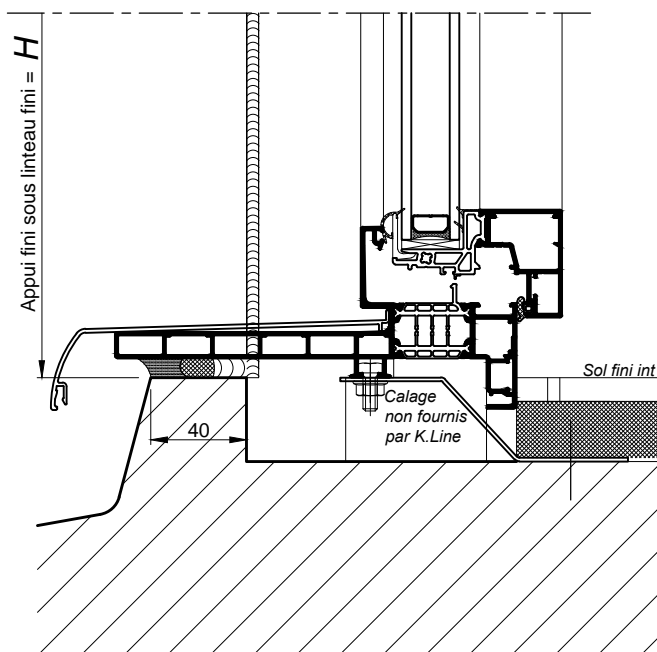


COUPE VERTICALE Ech 1/3



COUPE HORIZONTALE PARTIELLE Ech 1/3

AU SOL FINI



COUPE VERTICALE PARTIELLE Ech 1/3